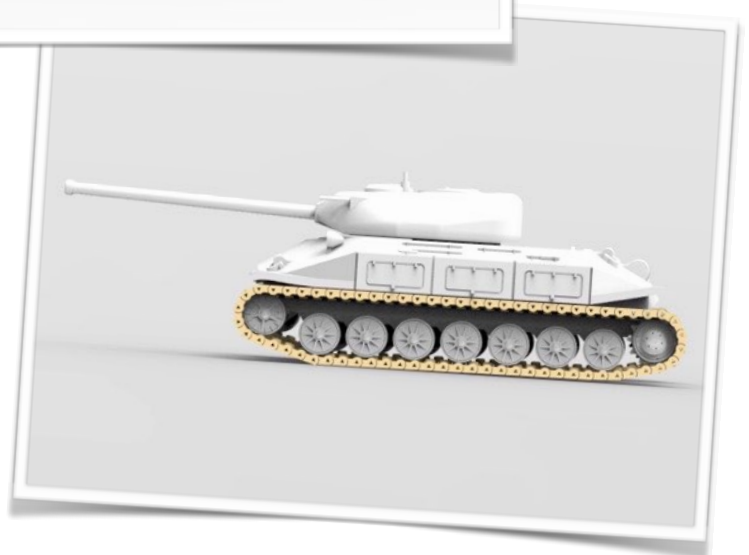


# Object 260

World of Tanks



# Printing Tutorial

## Part 4 of 8

If you have followed this tutorial you will now have this :



# Lesson 4 Post processing

As I am away this week and have no access to a 3D printer I have decided to have a closer look at the post processing side of building the Object 260.

## **TOOLS NEEDED:**

Water

Sand paper

Sharp modeling knife (be careful with children)



Small pliers flat nosed and long nose



## TOOLS Continued

Small drill



You may ask why water, as you have probably experienced yourself if the part you are working on becomes hot it will soften and sometimes too the extent that it become deformed.

Using water when sanding will held keep the part cool and reduce the risk of deformation.



## My favorite tool

Is a Dremel modeling multi tool that runs on rechargeable batteries. It can safely be used with water (no risk of electrocution)  
**NEVER USE WATER WITH A MAINS POWERED DRILL**

## Tool Bits

I have 2 favorit tool bits:

One is a type of HSS Milling tool



The other is a round interchangeable sanding tube :

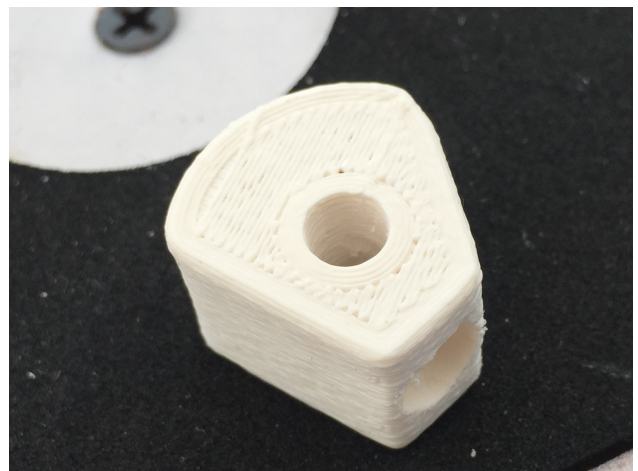


Both of these can be safely used with water (but be careful of running them to fast) you may get a lot of water projections so be sur to do this in a place that it wont matter.

Always go slowly when removing material it's easier to remove than to add. Take the time to test fit parts then remove some more and test fit again, also be careful not to remove the wanted details of your parts by sanding or cutting away too much.

## Post processing the gun turret

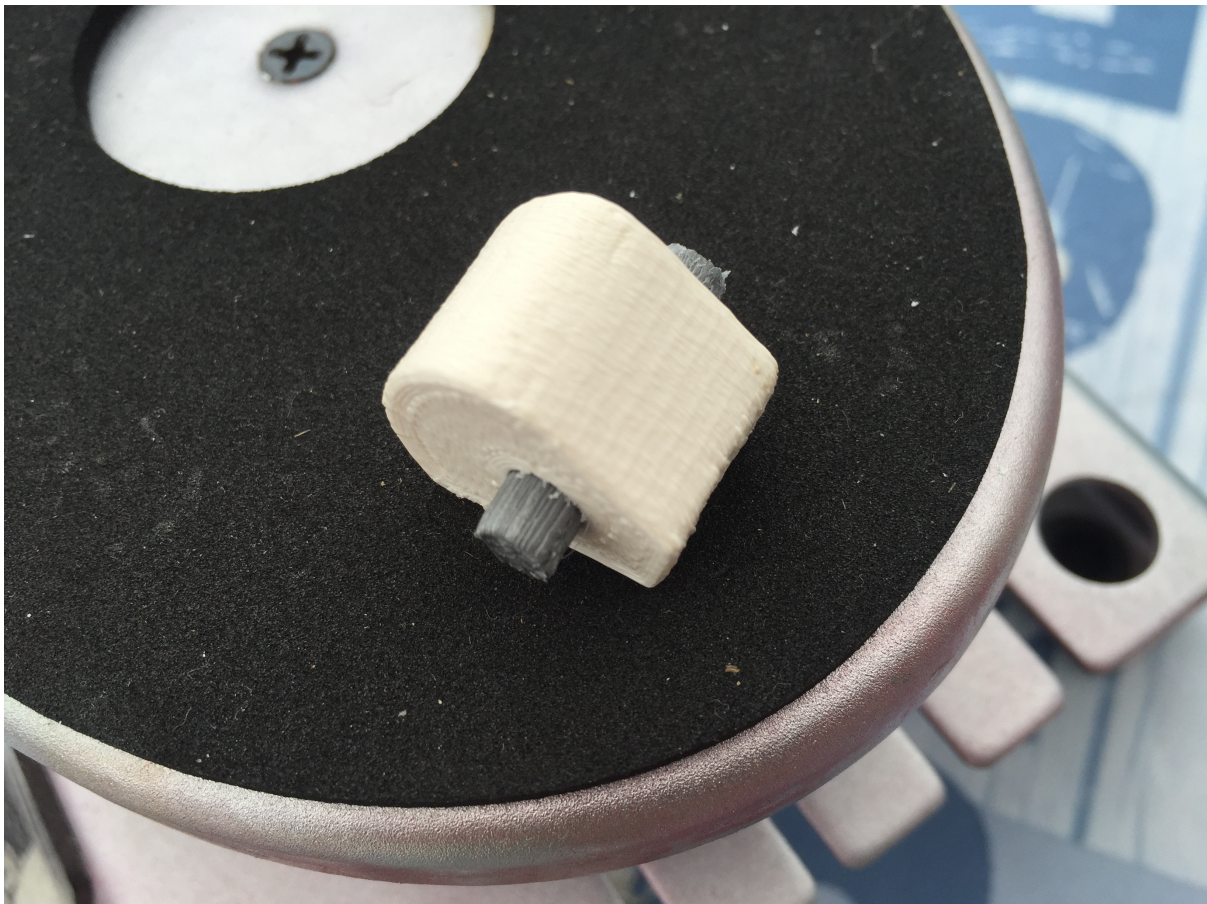
You may need to adjust the Gun and it's pivot:



If the gun is a bit tight fitting into the pivot lightly sand the the last 1/2 inch until it just slides in nicely, if you leave an interference fit you wont need to glue the together, as mentioned above use some water when sanding to avoid heating the part.



Now you can put the axle into the pivot, this should be a good quite tight fit, I used a small hammer just to nock it fully in place.



Try to get equal lengths of the axle on each side of the pivot.

Put the gun into the pivot and glue if needed



In this photo you can see the finish of the printed surfaces, I am not going to sand them as this will add to the camouflage affect once painted.

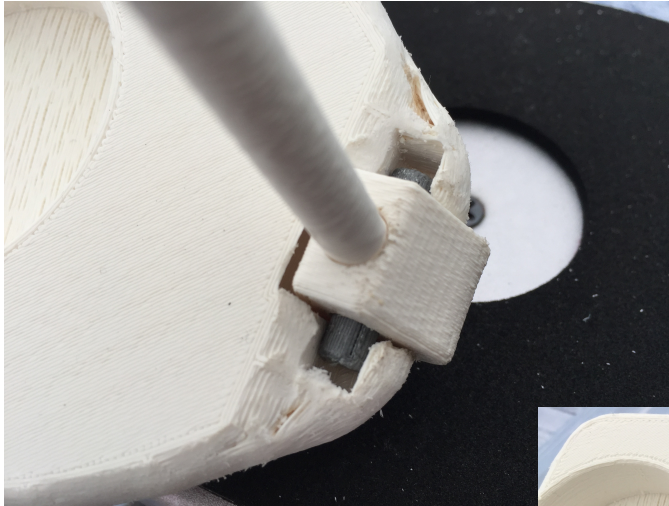


Now you can assemble the above onto the swirling part of the gun turret. But first you need to clean up this part and remove the printed support material, carefully cut away the printed support and then sand them smooth once again using water.





Assembly is very simple just hold the swivel upside down and the slide vertically the assemble gun and pivot into the slot, now rotate the gun to a horizontal position, this will lock the two parts together.



Now you should have a gun that will move up and down



**Next week we will  
start on the tracks  
and wheels**

**See you then**