

# DIY - TL - Smoother



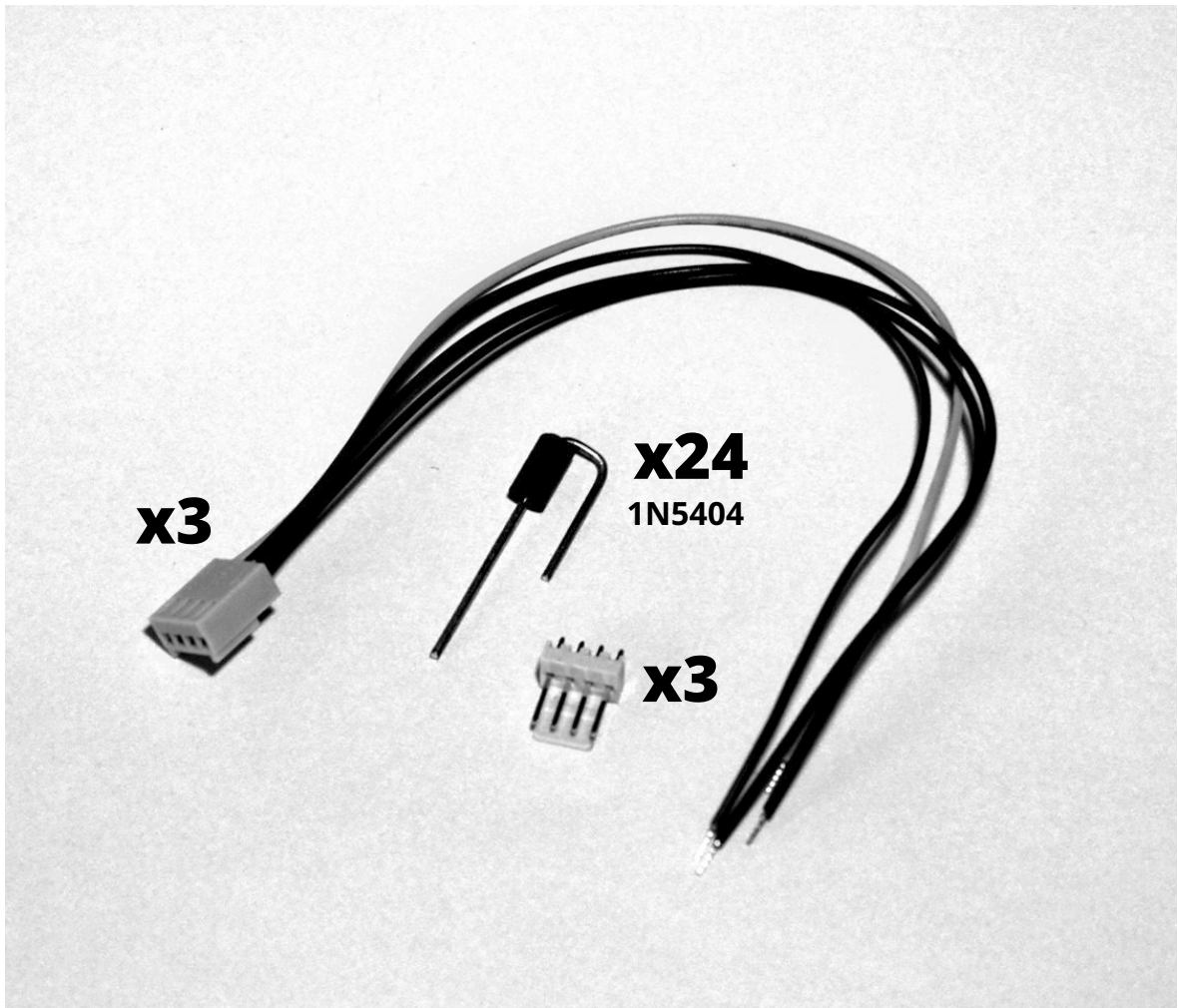
**TOPE**designs



**RuiRaptor**

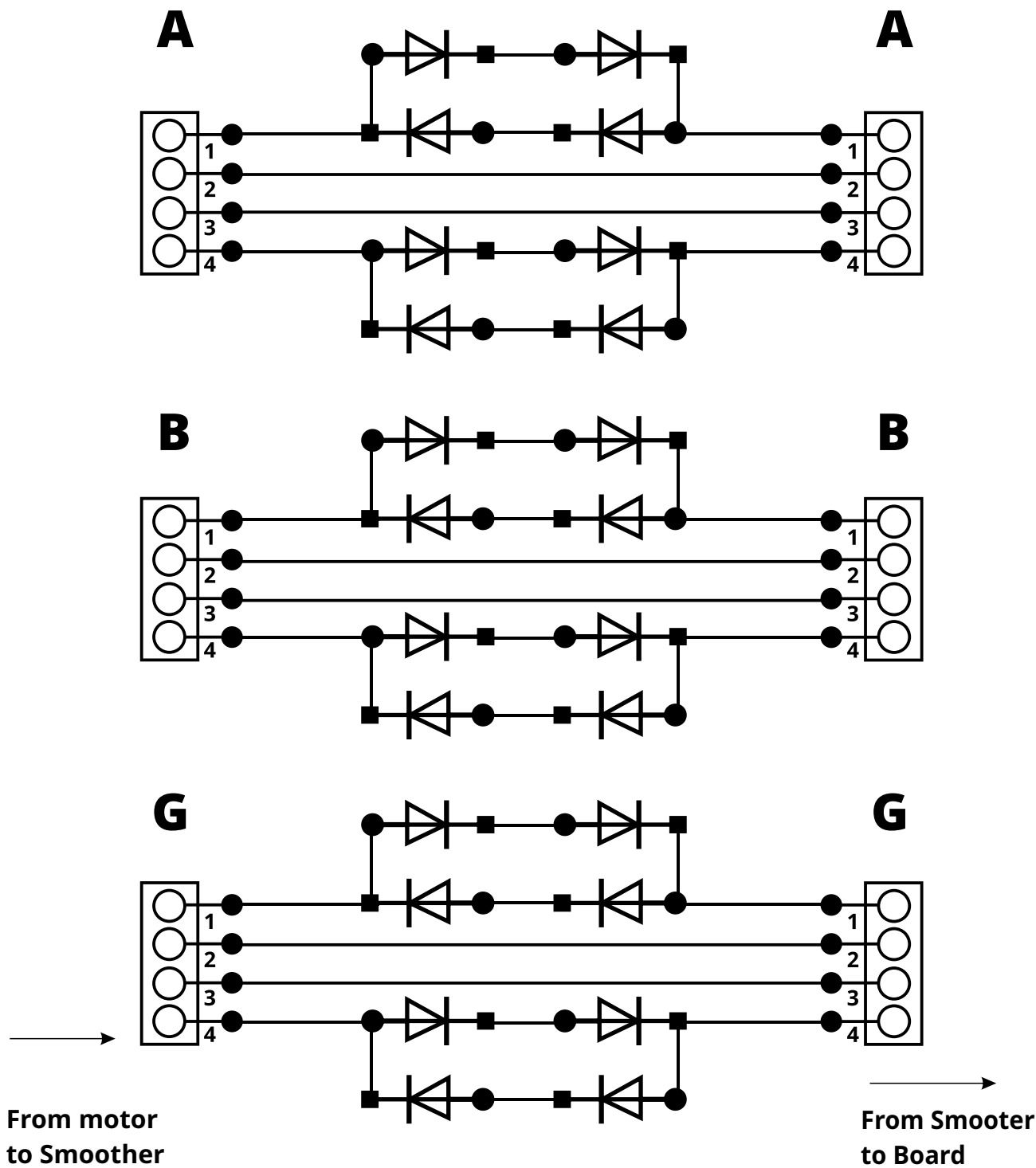
**PT-TL-SMOOTHER 1017**

## Material

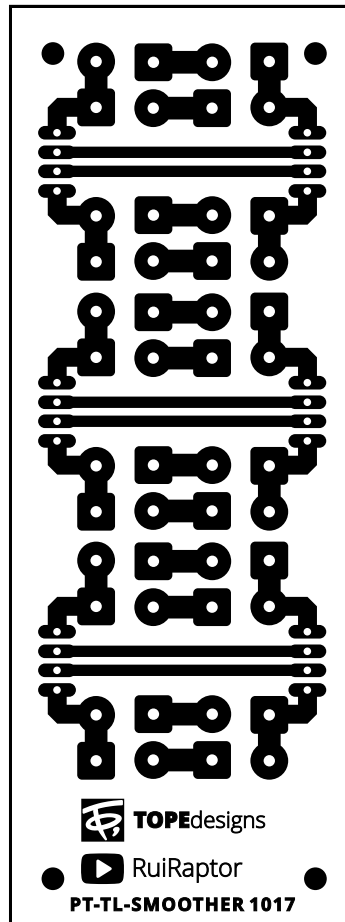


**3 x 4 pin Female Molex Connector with cable**  
**3 x 4 pin Male Molex Connector**  
**24 x 1N5404 Diod**

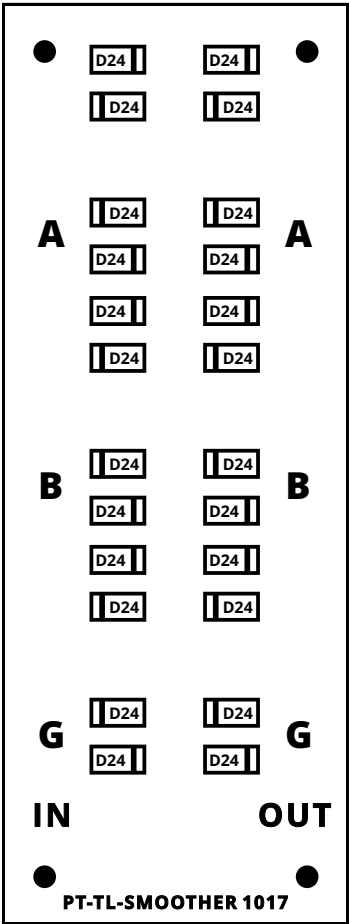
Diagram



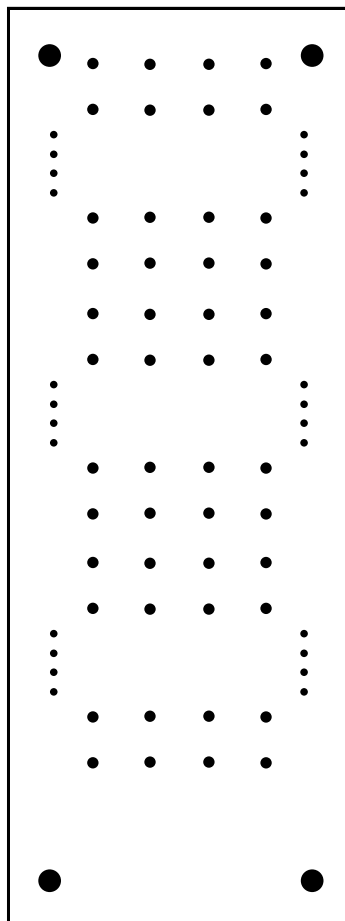
## PCB bottom view



PCB top view

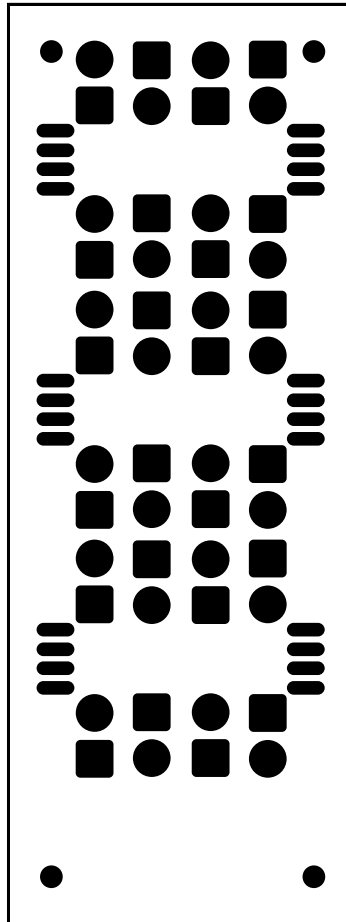


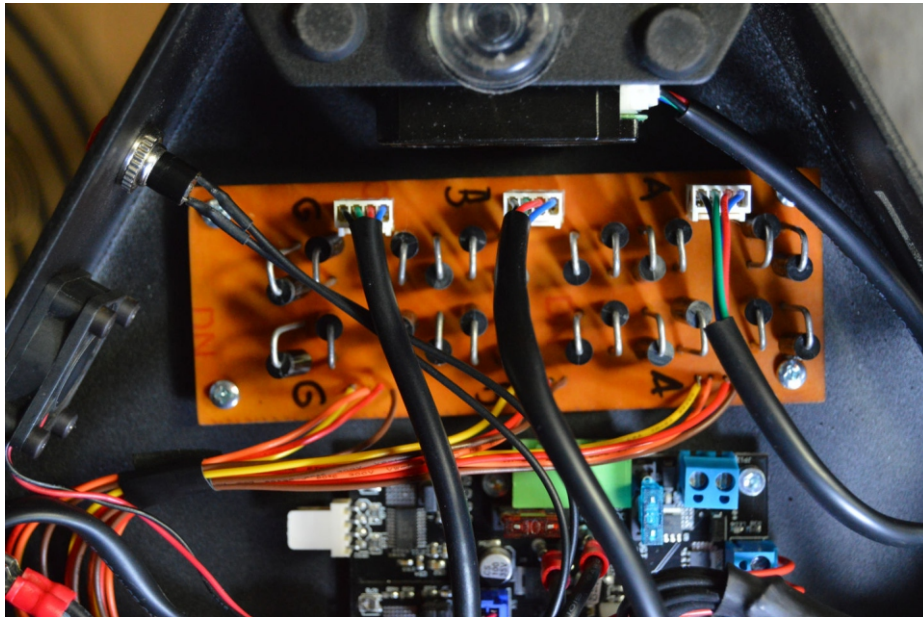
## Drill layout



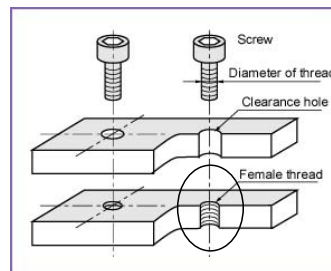
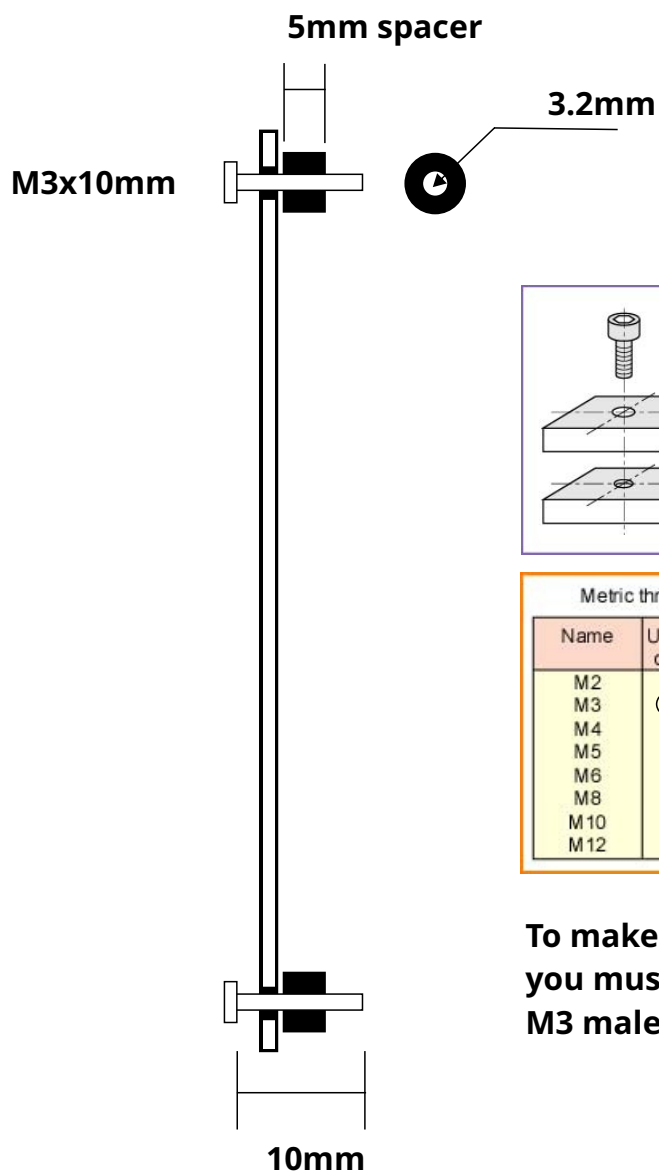
- 3mm
- 1,5mm
- 1mm

## PCB bottom mask





This board was designed to fit on the bottom of MicroDeltaRework.



Metric threads		Piping threads		
Name	Under hole dia. (mm)	Name	Outer dia. (mm)	Under hole dia. (mm)
M2	1.6	PF1/8	9.7	8.6
M3	2.5	PF1/4	13.2	11.5
M4	3.3	PF3/8	16.7	15.0
M5	4.2	PF1/2	21.0	19.0
M6	5.1	PT1/8	(9.7)	8.2
M8	6.8	PT1/4	(13.2)	11.0
M10	8.6	PT3/8	(16.7)	14.5
M12	10.3	PT1/2	(21.0)	18.0

To make a female M3 hole you must drill at 2,5mm and use M3 male Diestock Tool